



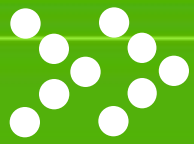
POLYVEN INTERNATIONAL, LLC



Sterling 10" Extruder



Equipment

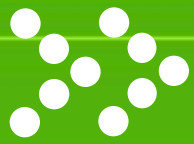


Specifications

www.polyven.org

- ❖ **Sterling 10" Extruder circa '98 / 32:1 L/D**
- ❖ **700 HP Motor drive / vented**
 - 786 HP w Service factor 1.25 / Max output 983 HP
- ❖ **Conair oversize fluff hopper with exit screw auger**
- ❖ **Auxiliary feeders / Ram stuffer**
- ❖ **Dynisco slide plate screen changer**
- ❖ **Gala SLC-7 pelletizing system w/dryer, water tank, external Mueller plate heat exchanger and 72" Sweco Classifier**

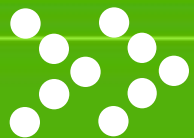




Specifications

- ❖ Weigh Bin with exit feed options
- ❖ Complete with all starters, drives and control panels
- ❖ Three spare screws
- ❖ New screw installed 6 months ago
- ❖ Spare equipment - Ram cylinder, barrell heaters, two pallets of screens for the screen changer, spare parts for Gala Dryer
- ❖ Gearbox in excellent condition
 - Totally rebuilt in 2006

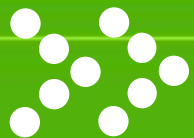




Pictures - Extruder

www.polyven.org

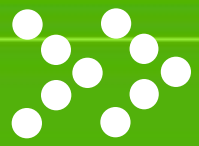




Pictures - Gearbox

www.polyven.org

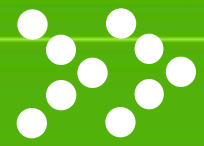




Pictures – Fluff Hopper

www.polyven.org

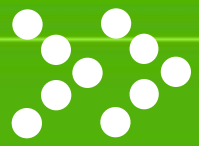




Pictures – Sweco Classifier

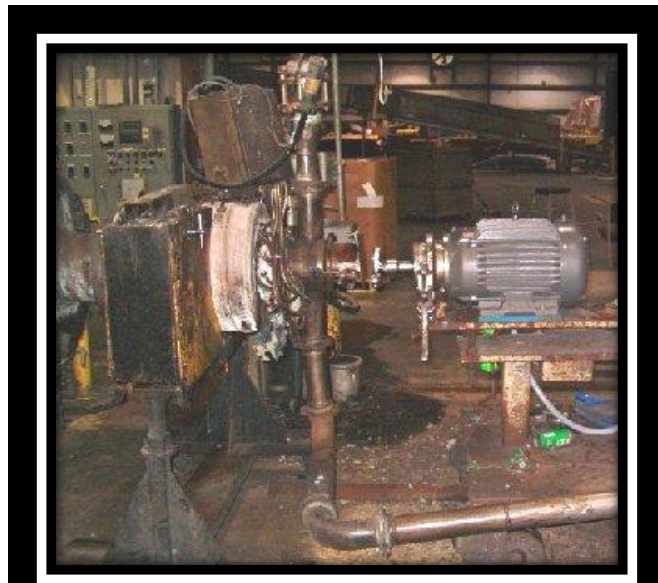
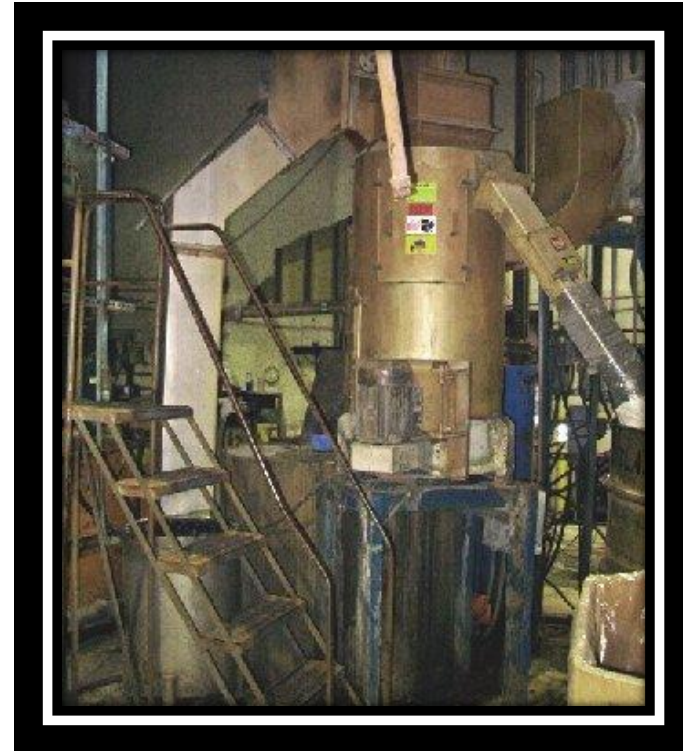
www.polyven.org





Pictures — Dryer/Pelletizer/Ram Stuffer

www.polyven.org





POLYVEN INTERNATIONAL, LLC



THANK YOU !
Sterling 10" Extruder



Equipment